

# Technical information



Basic element type T, silver coloured, anodized with steel clamping screws

- Item No. 00.002 3-5mm
- Item No. 00.102 5-8mm
- Item No. 00.202 8-10mm

Weight: 0,035 kg  
Traction: 20 kg

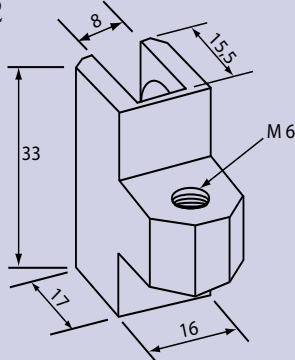


Basic element type T, silver coloured, anodized with plastic clamping screws

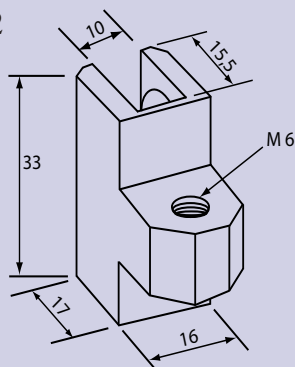
- Item No. 01.002 3-5mm
- Item No. 01.102 5-8mm
- Item No. 01.202 8-10mm

Weight: 0,035 kg  
Traction: 10 kg

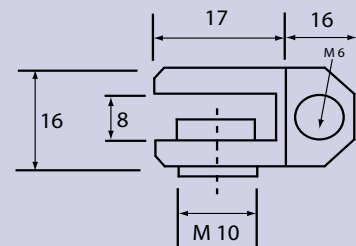
00.002 + 01.002  
00.102 + 01.102



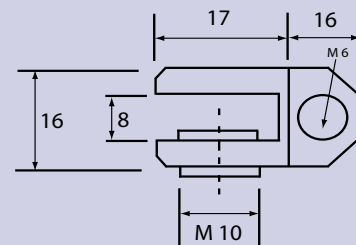
00.202 + 01.202



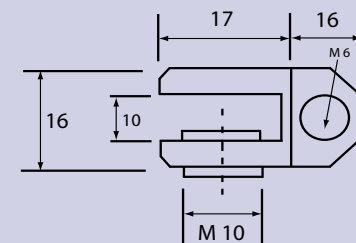
00.002 + 01.002



00.102 + 01.102



00.202 + 01.202

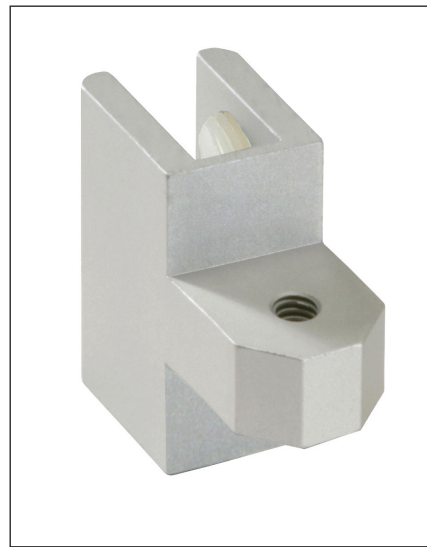


# Technical information



**Basic element type T, silver coloured,  
anodized with steel clamping screws**

- Item No. 00.002 3-5mm**
- Item No. 00.102 5-8mm**
- Item No. 00.202 8-10mm**



**Basic element type T, silver coloured,  
anodized with plastic clamping screws**

- Item No. 01.002 3-5mm**
- Item No. 01.102 5-8mm**
- Item No. 01.202 8-10mm**

Item No.	for panel thickness ( mm )	Material	Surface	Traction
00.002	3 - 5	Aluminium	silver coloured, anodized E6/EV1	~ 20 kg
01.002	3 - 5	Aluminium	silver coloured, anodized E6/EV1	~ 10 kg
00.102	5 - 8	Aluminium	silver coloured, anodized E6/EV1	~ 20 kg
01.102	5 - 8	Aluminium	silver coloured, anodized E6/EV1	~ 10 kg
00.202	8 - 10	Aluminium	silver coloured, anodized E6/EV1	~ 20 kg
01.202	8 - 10	Aluminium	silver coloured, anodized E6/EV1	~ 10 kg