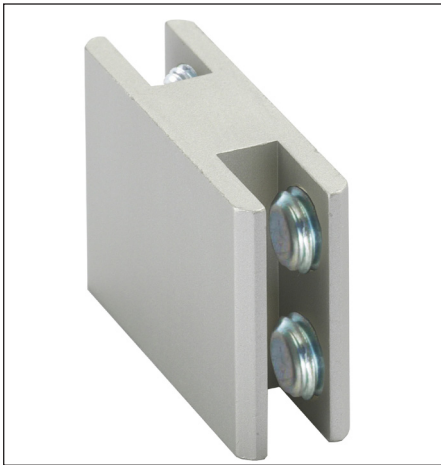


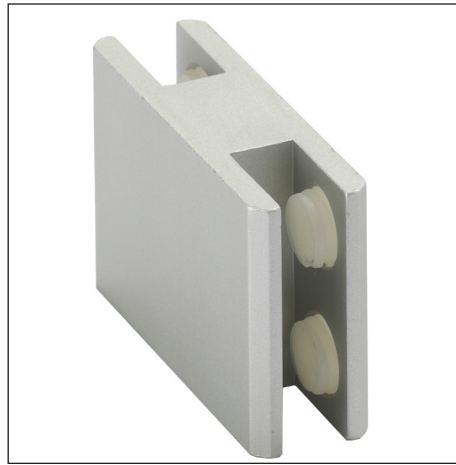
Technical information



Central connector 180°, silver coloured, anodized with steel clamping screws

- Item No. 00.005 3-5mm
- Item No. 00.105 5-8mm
- Item No. 00.205 8-10mm

Weight: 0,065 kg
Traction: 20 kg

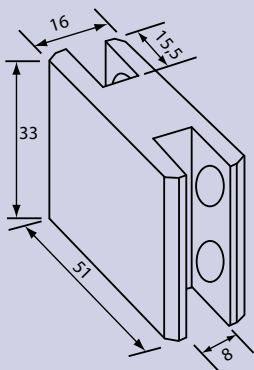


Central connector 180°, silver coloured, anodized with plastic clamping screws

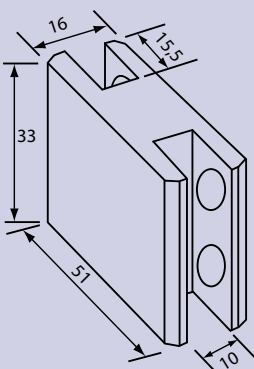
- Item No. 01.005 3-5mm
- Item No. 01.105 5-8mm
- Item No. 01.205 8-10mm

Weight: 0,065 kg
Traction: 20 kg

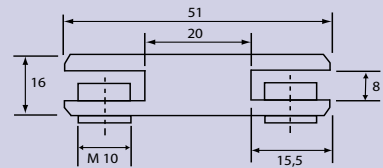
00.005 + 01.005
00.105 + 01.105



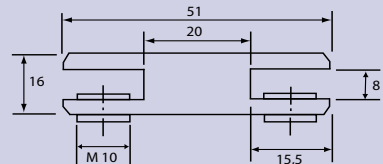
00.205 + 01.205



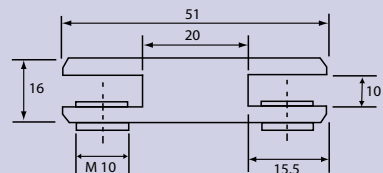
00.005 + 01.005



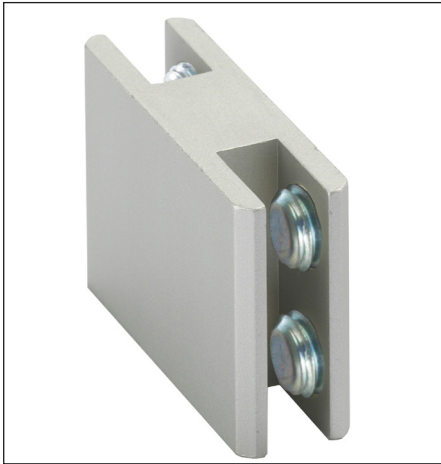
00.105 + 01.105



00.205 + 01.205

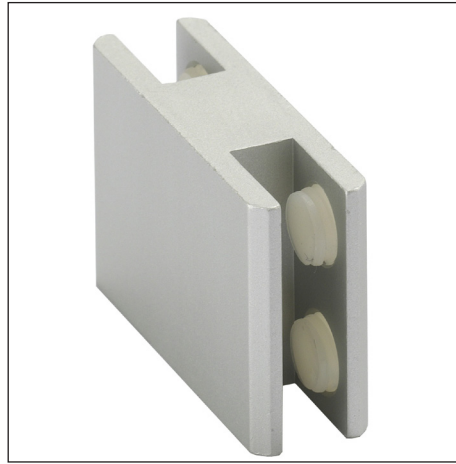


Technical information



Central connector 180°, silver coloured, anodized with steel clamping screws

- Item No. 00.005 3-5mm**
- Item No. 00.105 5-8mm**
- Item No. 00.205 8-10mm**



Central connector 180°, silver coloured, anodized with plastic clamping screws

- Item No. 01.005 3-5mm**
- Item No. 01.105 5-8mm**
- Item No. 01.205 8-10mm**

| Item No. | for panel thickness (mm) | Material | Surface | Traction |
|----------|----------------------------|-----------|----------------------------------|----------|
| 00.005 | 3 - 5 | Aluminium | silver coloured, anodized E6/EV1 | ~ 20 kg |
| 01.005 | 3 - 5 | Aluminium | silver coloured, anodized E6/EV1 | ~ 10 kg |
| 00.105 | 5 - 8 | Aluminium | silver coloured, anodized E6/EV1 | ~ 20 kg |
| 01.105 | 5 - 8 | Aluminium | silver coloured, anodized E6/EV1 | ~ 10 kg |
| 00.205 | 8 - 10 | Aluminium | silver coloured, anodized E6/EV1 | ~ 20 kg |
| 01.205 | 8 - 10 | Aluminium | silver coloured, anodized E6/EV1 | ~ 10 kg |