

Technical information



**Basic element Typ T silver coloured,
anodized with steel clamping screws**

Item No. 00.302 10-13mm
Item No. 00.402 13-16mm

Weight: 0,045 kg
Traction: 30 kg

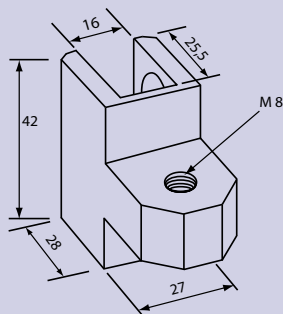


**Basic element Typ T, silver coloured,
anodized with plastic clamping screws**

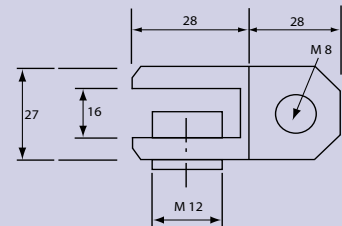
Item No. 01.302 10-13mm
Item No. 01.402 13-16mm

Weight: 0,045 kg
Traction: 20 kg

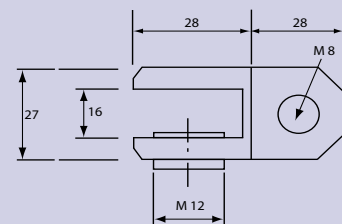
00.302 + 01.302
00.402 + 01.402



00.302 + 01.302



00.402 + 01.402



Technical information



**Basic element Typ T silver coloured,
anodized with steel clamping screws**

Item No. 00.302 10-13mm

Item No. 00.402 13-16mm



**Basic element Typ T, silver coloured,
anodized with plastic clamping screws**

Item No. 01.302 10-13mm

Item No. 01.402 13-16mm

Item No.	for panel thickness (mm)	Material	Surface	Traction
00.302	10 - 13	Aluminium	silver coloured, anodized E6/EV1	~ 30 kg
01.302	10 - 13	Aluminium	silver coloured, anodized E6/EV1	~ 20 kg
00.402	13 - 16	Aluminium	silver coloured, anodized E6/EV1	~ 30 kg
01.402	13 - 16	Aluminium	silver coloured, anodized E6/EV1	~ 20 kg