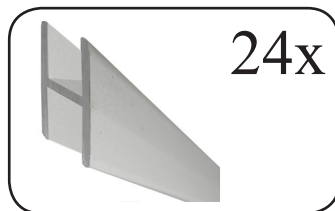
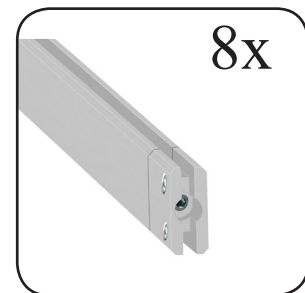
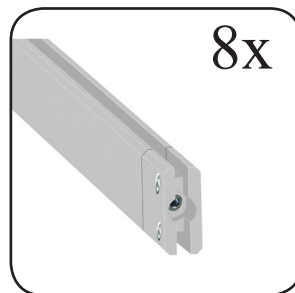
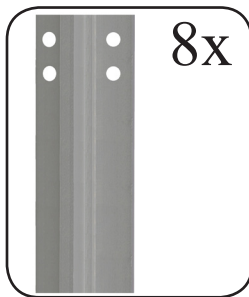
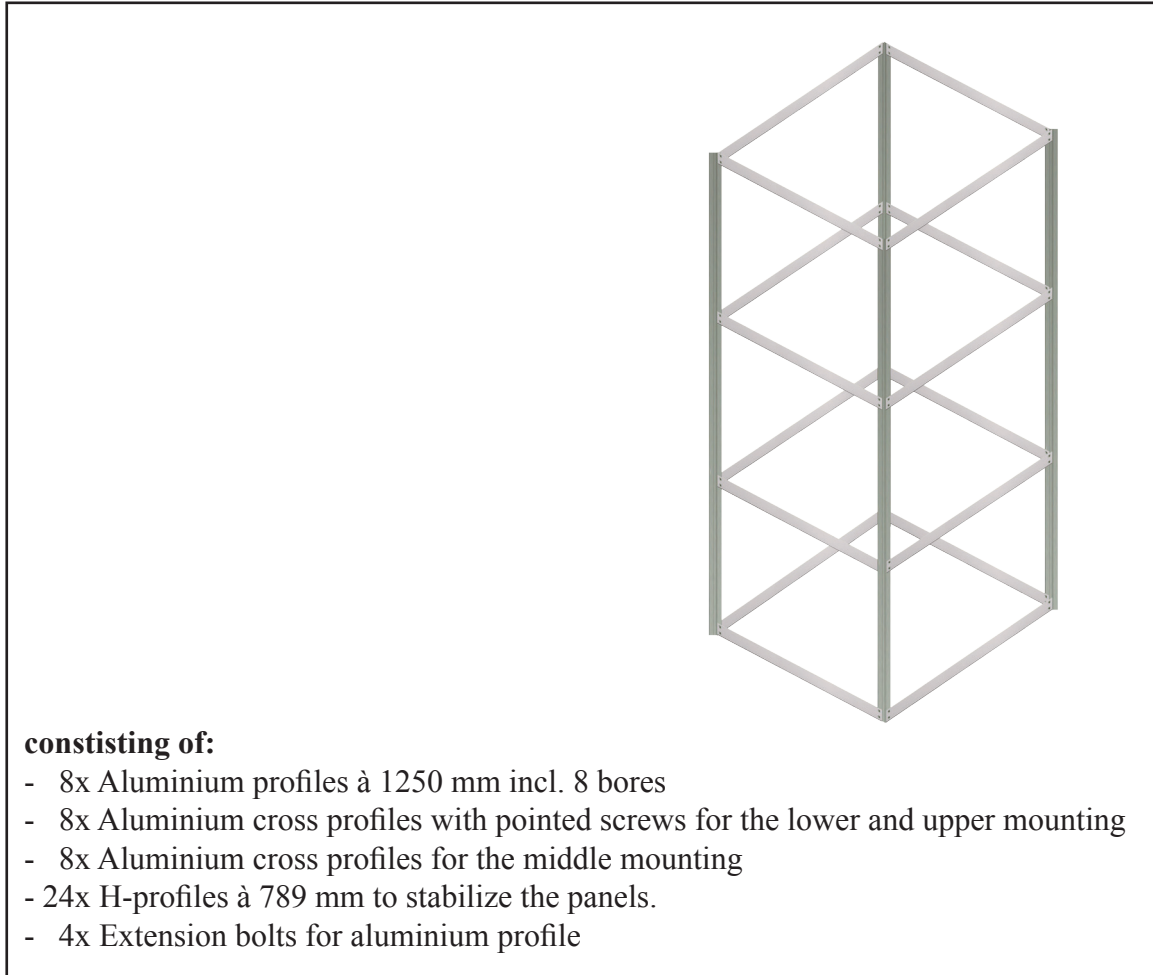


Assembly instructions for the Advertising tower 40.130



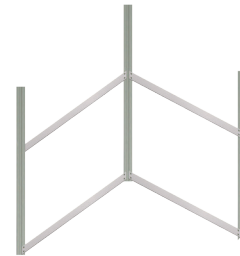
Important during assembly

Pointed screws must be used for all profiles that have holes.

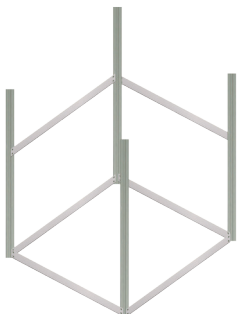
1. Mount the bottom cross profiles including the pointed screws to form the corner.



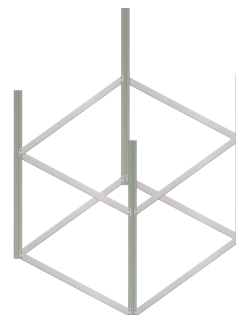
2. Now mount the first middle cross profiles.



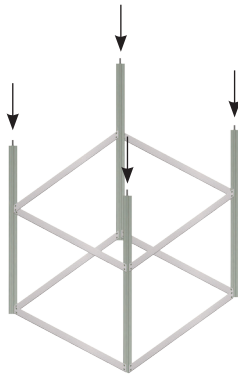
3. Mount the required lower cross profiles including pointed screws.



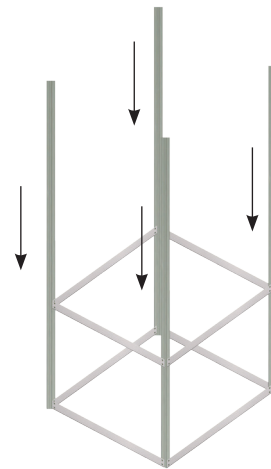
4. Now mount the next first middle cross profiles.



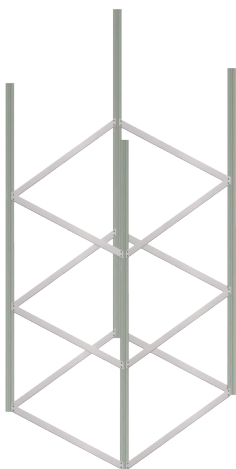
5. Insert the bolts in the profile.



7. Push the top profiles onto the bolts. Ensure that the holes face upward.



8. Now mount the second middle cross profile.



9. Finally mount the last cross profile including the pointed screws.

